

Preview of Moore County Board of Education 2019-2021 School Assignment Process

North Moore (Area 2) Community Forum
R.P. “Bob” Grimesey, Jr., Ed.D., Superintendent
February 19, 2019

Purpose of this Forum

- Provide information about the guiding principles, intentions, process and timeline.
- Invite questions and clarify misunderstandings.
- Measure expectations and general perceptions.
- Gather input and ideas.
- Identify worries and concerns.
- Build community confidence and trust in process.

Guiding Principles

Balance – Utilization, program opportunities and student demographics.

Efficiency – Seek best benefit for students and community at lowest possible operational cost.

Planning – Apply most updated school and planning data with attention to current and future needs.

Community – Transparent process, community engagement and sensitivity to needs of students, families, communities and school district.

Guiding Principles / Limitations

- No intended priority among principles.
- Some principles may overlap.
- Some principles will conflict.
- Proposed plans will require compromise among principles.

Community Information Forums: Process Previews

- ✓ **6:00-7:30 p.m. Tuesday, February 19** – North Moore High School feeder area (Area 2) at Elise Middle School gymnasium.
- **6:00-7:30 p.m. Tuesday, February 26** – Pinecrest High School feeder area (Area 3) at Southern Middle School multi-purpose room.
- **6:00-7:30 p.m. Thursday, March 7** – Union Pines High School feeder area (Area 1) at New Century Middle School multi-purpose room.

School Assignment Process: Timeline

- ✓ **February 4** School Board Work Session – Establish guiding principles, conduct needs assessment, approve process and timeline.
- **February-March** – Staff works with advisory committee to develop first draft of school assignment plan.
- **April 1** School Board Work Session – Presentation of first draft of plan.
- **April 2 & 3** – Community input meetings at New Century and Southern middle schools.

School Assignment Process: Timeline

- **April** – Staff works with advisory committee to develop second draft of school assignment plan.
- **May 6** School Board Work Session - Presentation of second draft of plan.
- **May 7 & 8** - Community input meetings at New Century and Southern middle schools.
- **May-August** – Staff work with advisory committee to develop final draft to submit to superintendent.

School Assignment Process: Timeline

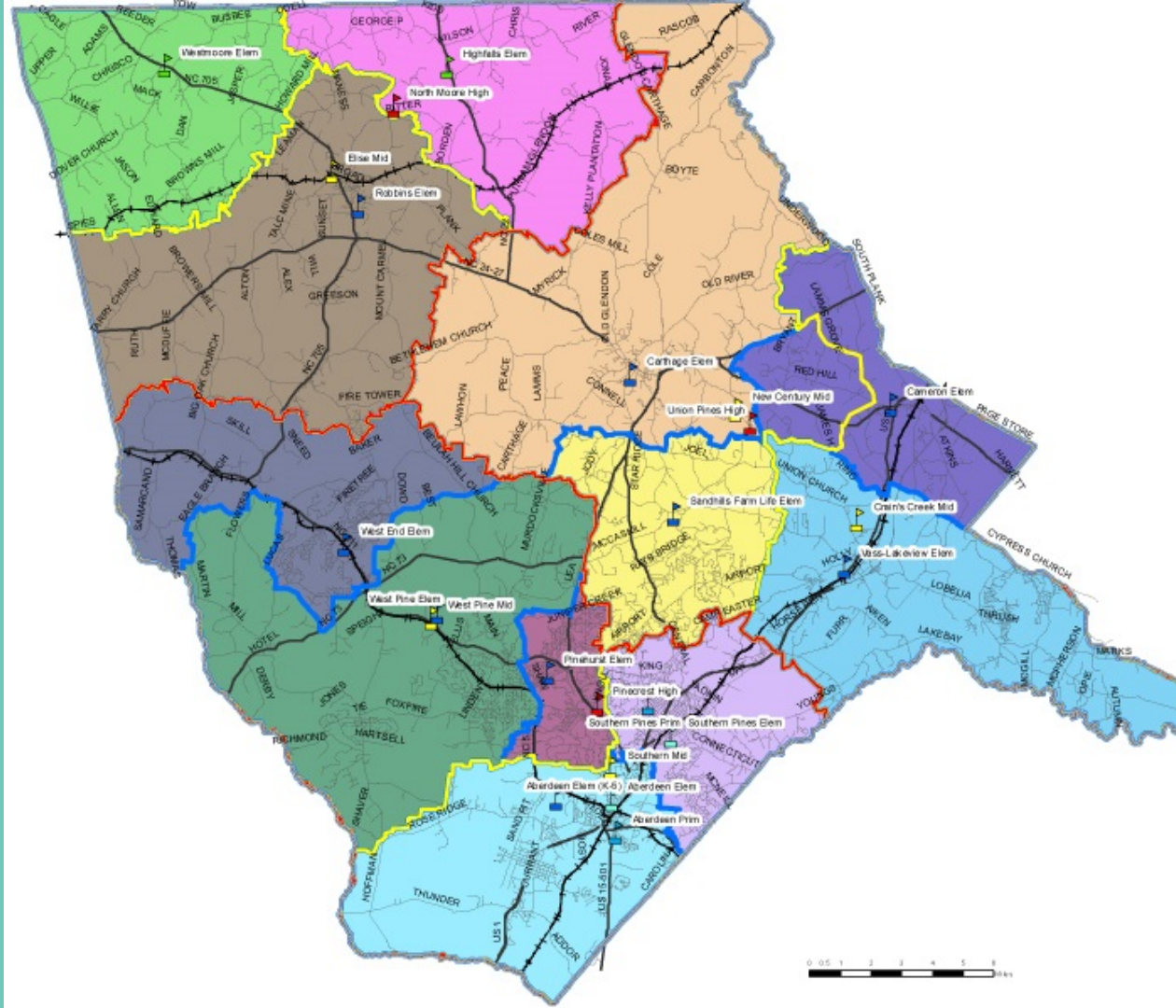
- **September 3** School Board Work Session – Presentation of superintendent’s multi-year student assignment plan.
- **Mid-September** – School Board Public Hearing to receive final public input on superintendent’s final draft plan.
- **October 7** School Board Work Session – School Board considers final draft plan and public input. Board determines what, if any, revisions it will make.
- **October 14** – School Board takes action on final multi-year student assignment plan.

School Assignment Process: Advisory Committee

- Membership consists of district staff, consultants and a principal, teacher and parent from each school except high schools and Pinckney Academy. One team represents Aberdeen primary and elementary and one team represents Southern Pines primary and elementary since each pair will be consolidated in 2020-21.
- Sub-committees for each feeder area will be chaired by the respective high school principal.
- Committee will participate in the development of each of the three drafts of the plan.

Current Moore County School Assignment Areas

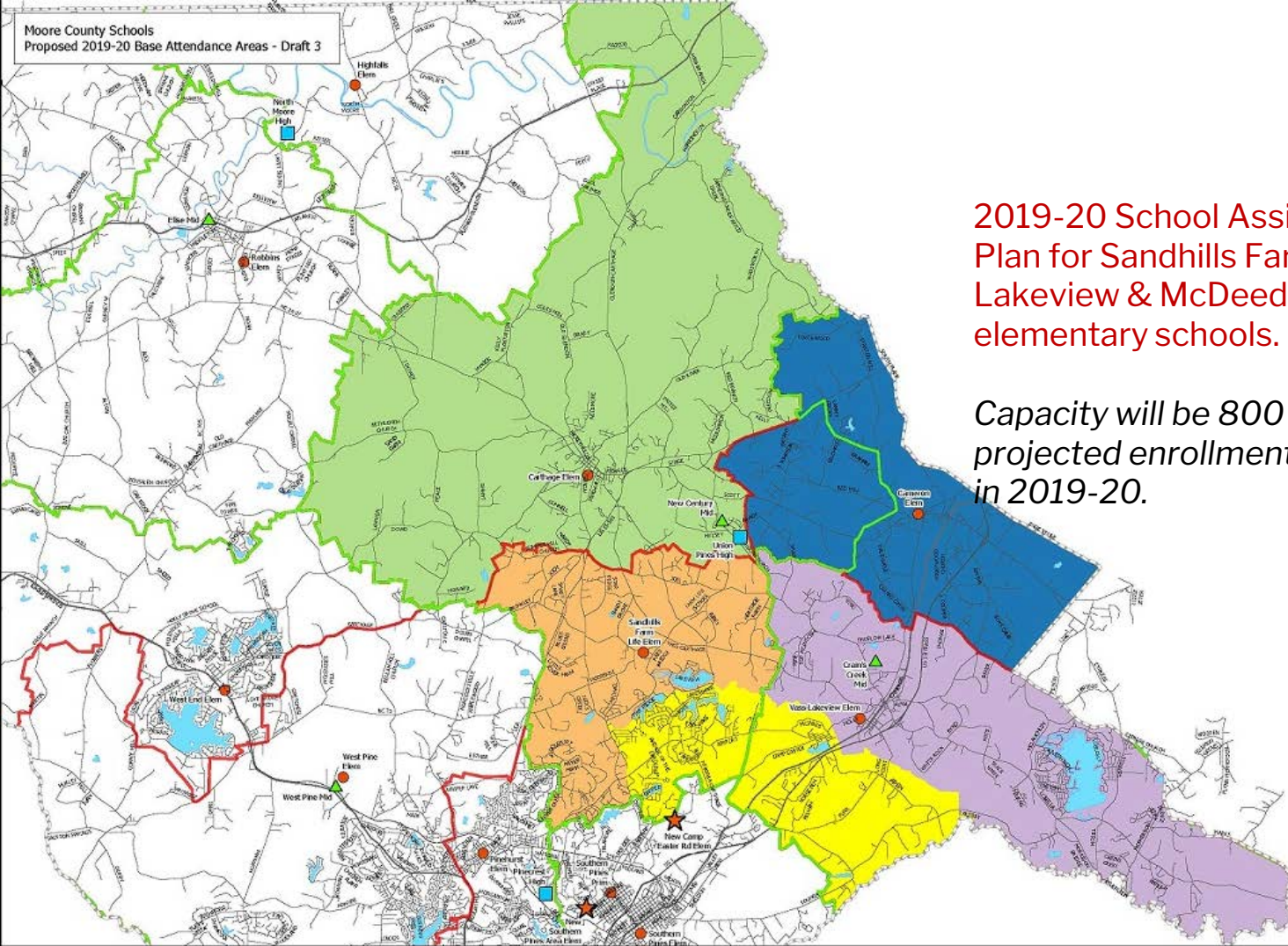
- Each color denotes an elementary school district.
- Yellow lines separate middle school districts.
- Red lines separate high school districts.



- Legend
- MS Boundaries - 2017-18
 - ES Boundaries - 2017-18
 - Cameron ES
 - Carthage ES
 - Sandhills Farm Life ES
 - Vass-Lakeview ES
 - New Camp Easter Rd ES

2019-20 School Assignment Plan for Sandhills Farmlife, Vass-Lakeview & McDeeds Creek elementary schools.

Capacity will be 800 and projected enrollment will be 520 in 2019-20.



Area 1 / Union Pines HS Feeder Area

“Unfinished Business”

- McDeeds Creek ES only at 65% utilization in 2019-20. Offers capacity for 150+ more students.
- Crains Creek and New Century middle schools offer capacity for 100+ students from Pinecrest feeder area...via McDeeds Creek?
- Cameron ES has capacity for 110+ more students.
- Vass-Lakeview ES utilization (84%) will need attention soon.
- Could Sandhills Farmlife ES benefit from more “transfers out” based on longer-term future growth?
- What role can Carthage ES play as the “hub of the wheel?”

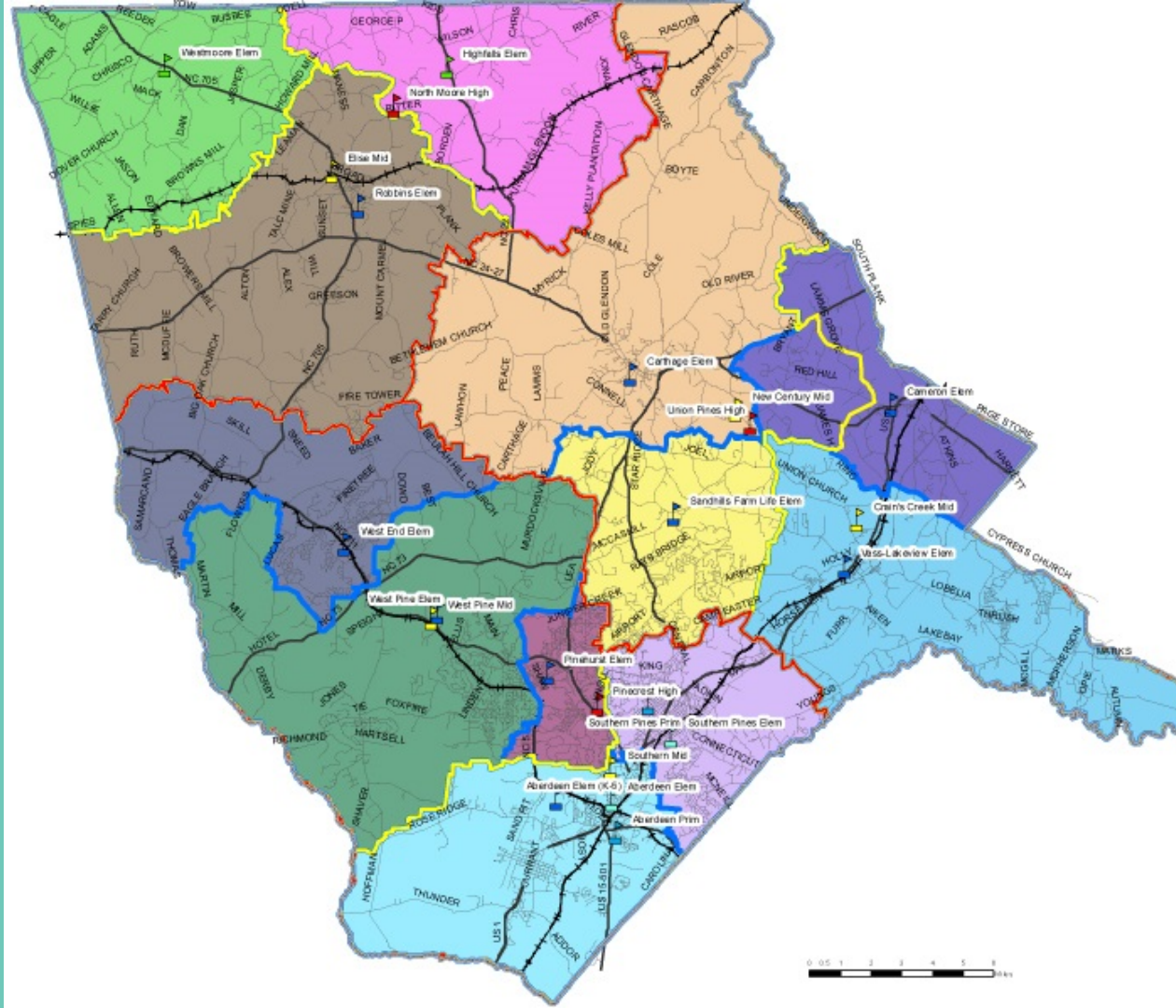
Area 3 / Pinecrest HS Feeder Area

New elementary schools require rethinking.

- New McDeeds Creek ES offers second Southern Pines elementary. May pull elementary enrollment eastward;
- Larger elementary schools in Southern Pines, Aberdeen and Pinehurst may offer relief to over-crowded West Pine ES;
- Moving some West Pine ES eastward may offer relief to rapidly growing enrollment at West End ES; and
- Severe demographic imbalance between West Pine MS and Southern MS feeder patterns requires attention.

Current Moore County School Assignment Areas

- Each color denotes an elementary school district.
- Yellow lines separate middle school districts.
- Red lines separate high school districts.



Area 2 / North Moore HS Feeder Area

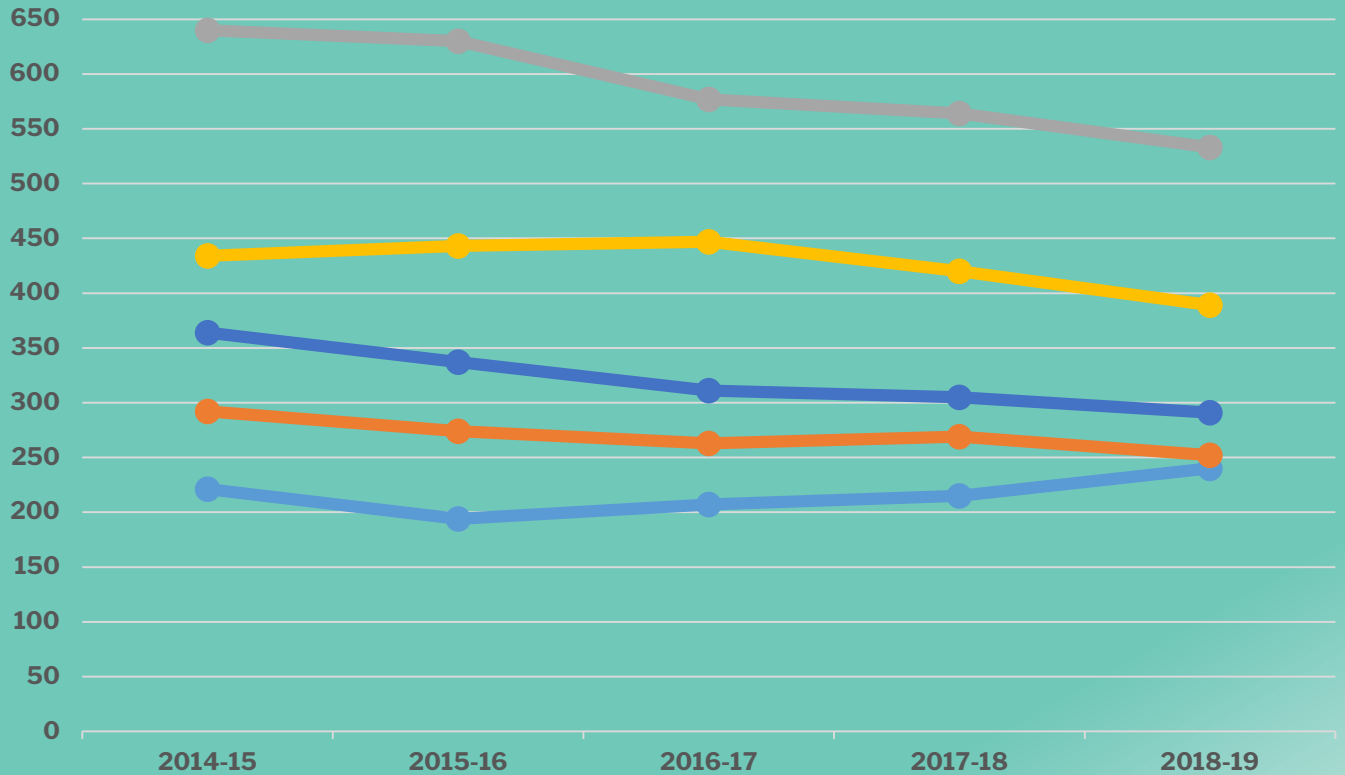
Declining enrollment requires action.

- All school facilities in reasonably good shape with exception of need for modernization at North Moore High School and gyms at Highfalls and Westmoore.
- Five-year overall enrollment decline of -13% among all five schools.
- Noticeable impact of home schooling (61+ households) and charter schools with 29 students now attending Uwharrie Charter Academy.
- North Moore schools offer available capacity.

Area 2 Enrollment Analysis / 2014-2018

Enrollment on Day 20, 2018							
School	2014	2015	2016	2017	2018	5-Year Difference	Percent Change
Elise Middle	221	194	207	215	240	19	9%
Highfalls Elementary	292	274	263	269	252	-40	-14%
North Moore High	640	630	577	564	533	-107	-17%
Robbins Elementary	434	443	447	420	389	-45	-10%
Westmoore Elementary	364	337	311	305	291	-73	-20%
Grand Total	1951	1878	1805	1773	1705	-246	-13%

Area II Enrollment Analysis 2014 to 2018



Elise Middle

Highfalls Elementary

North Moore High

Robbins Elementary

Westmoore Elementary

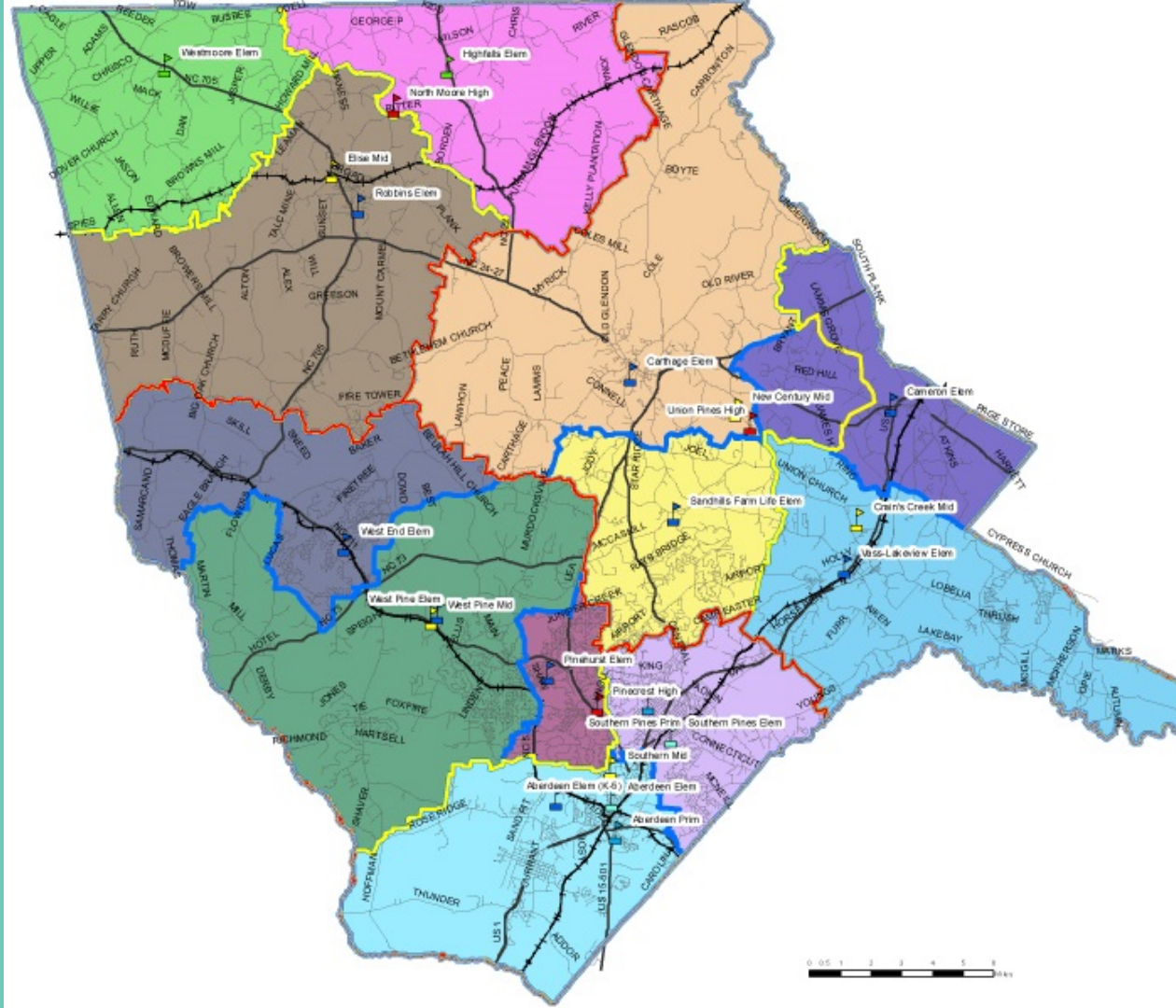
Area 2 / North Moore HS Feeder Area

Most recent steps taken by School Board and staff.

- January 14, 2019 – Revised out-of-county tuition policy to define “under-enrolled” schools and to allow waiver of tuition for out-of-county students who attend those schools. Qualifying schools include NMHS, HFES and WMES; and
- Identified under-enrollment in North Moore area schools as a priority in 2019 school assignment planning process.

Current Moore County School Assignment Areas

- Each color denotes an elementary school district.
- Yellow lines separate middle school districts.
- Red lines separate high school districts.



How to Stay Involved

- Attend or view School Board work sessions.
- Monitor School Board meeting link on MCS web site.
- Attend community forums in February through May.
- Attend public hearing in September.
- Attend your school's parent advisory committee meetings.
- Communicate with your representative on the district school assignment plan advisory committee.
- Communicate with your School Board representative.

Audience Engagement

Please limit to 2-3 minutes.

- Questions
- Clarifications
- Expectations
- Perceptions
- Feedback / Input / Suggestions
- Worries / Concerns
- Compliments?